

CHASING

CHASING Shore-Based Power Supply System

24/7 Operation, Safe and Efficient

| CHASING M2 PRO/ M2 PRO MAX



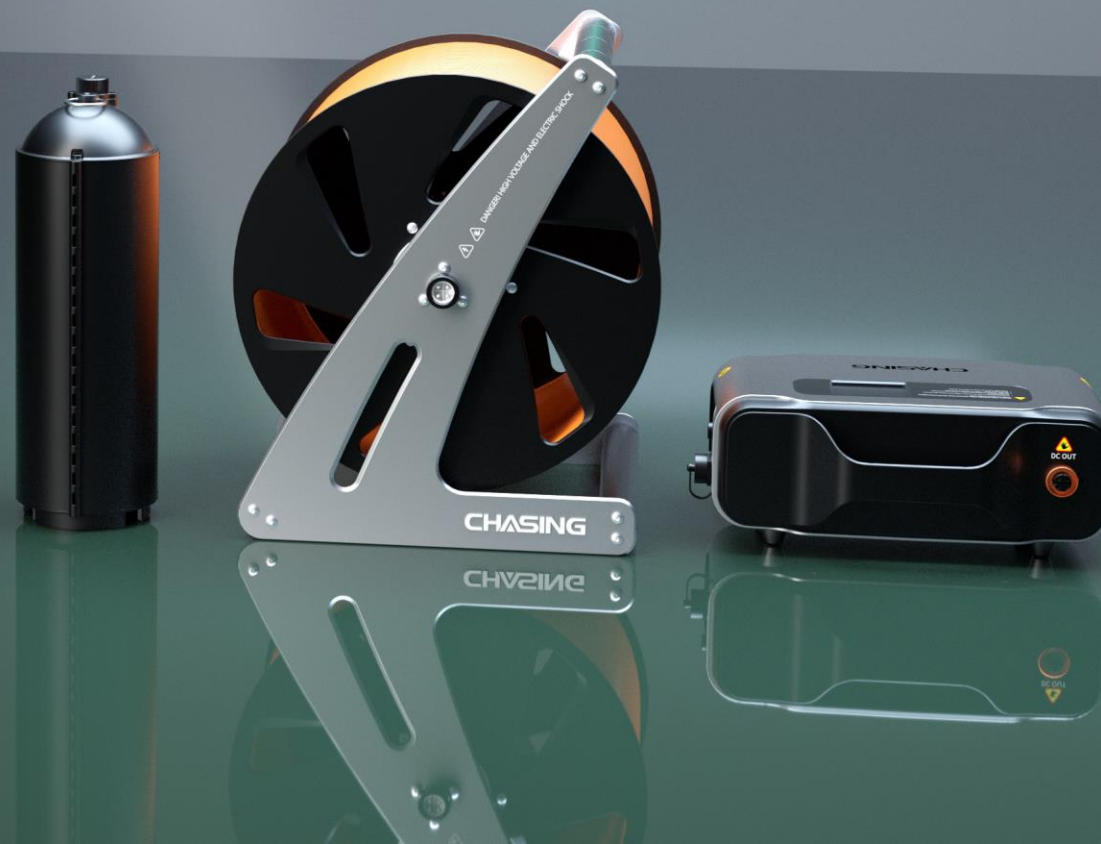
24/7 Operation



Safe



Efficient



CHASING Shore-based Power Supply System (C-SPSS)

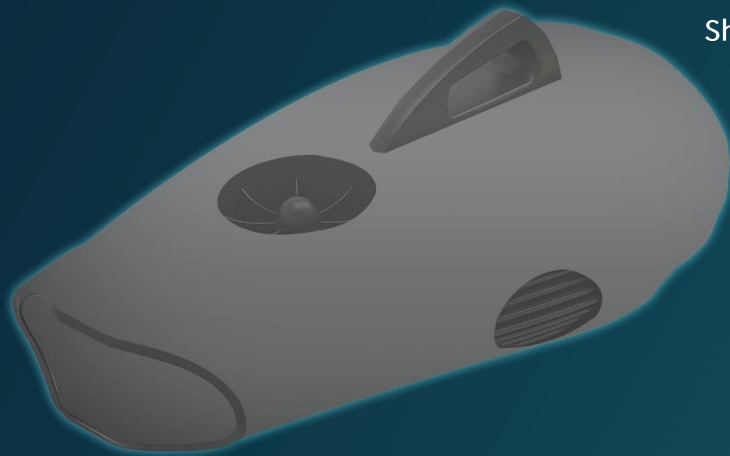
exclusively customized for CHASING M2 PRO and CHASING P200 PRO MAX, is featured by battery compartment design, enabling easy installation and a maximum output power of 1,500W, and ensuring that the ROV can work 24/7 at full power without power outage. The C-SPSS is provided 100m or 200m transmission cable to satisfy the demand of 24/7 operation in a wide range. Armed with a multiple protection system, the C-SPSS can guarantee the safety of users in operation.

If mounted with CHASING Shore-based Power Supply System (C-SPSS), the ROV can achieve long-term underwater operation, without time-consuming work such as battery replacement, greatly improving its operation efficiency. The C-SPSS provides superior and more comprehensive solutions for scientific exploration and environmental protection, water conservancy and hydropower inspection, hull & dock inspection, emergency rescue and other industries.



Continuous power supply, 24/7 operation

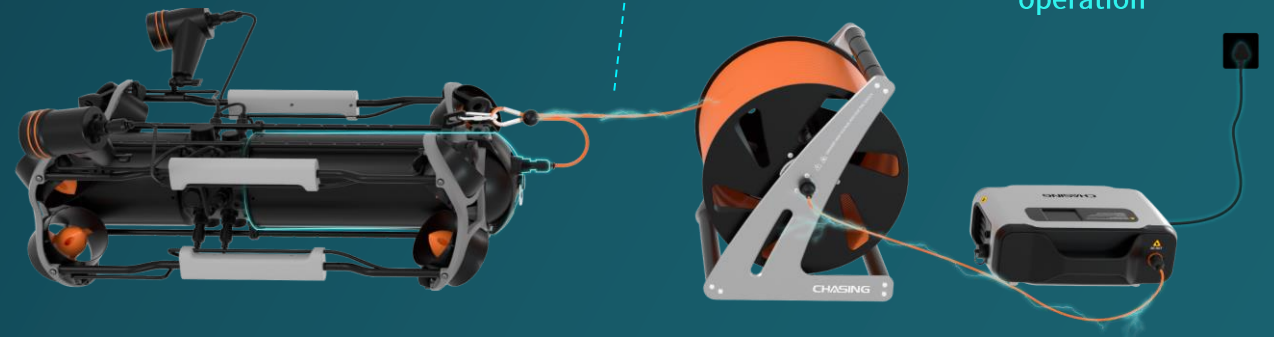
CHASING Shore-based Power Supply System (C-SPSS) resolves the challenges in short battery life, frequent battery replacement and reduced operation efficiency in conventional ROV operations. Its maximum output power is 1,500W, which is sufficient for the output power of 5 accessories at the same time, enabling 24/7 operation and greatly improving the operation efficiency. The C-SPSS is applicable to more application scenarios.



ROV Traditional homework



Short battery life



Maximum output power
1500W



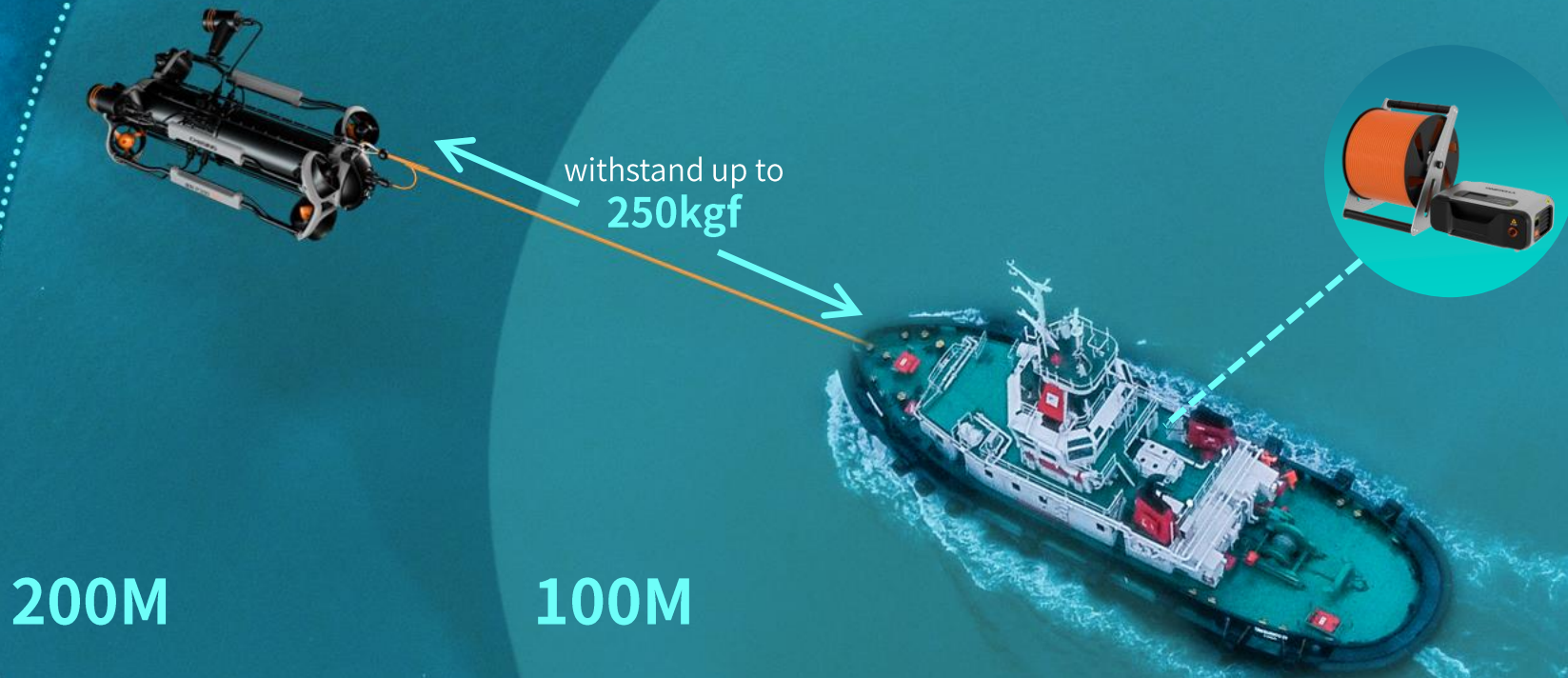
24/7
operation

CHASING Shore-Based Power Supply System

Long-distance power supply to realize unrestricted operation

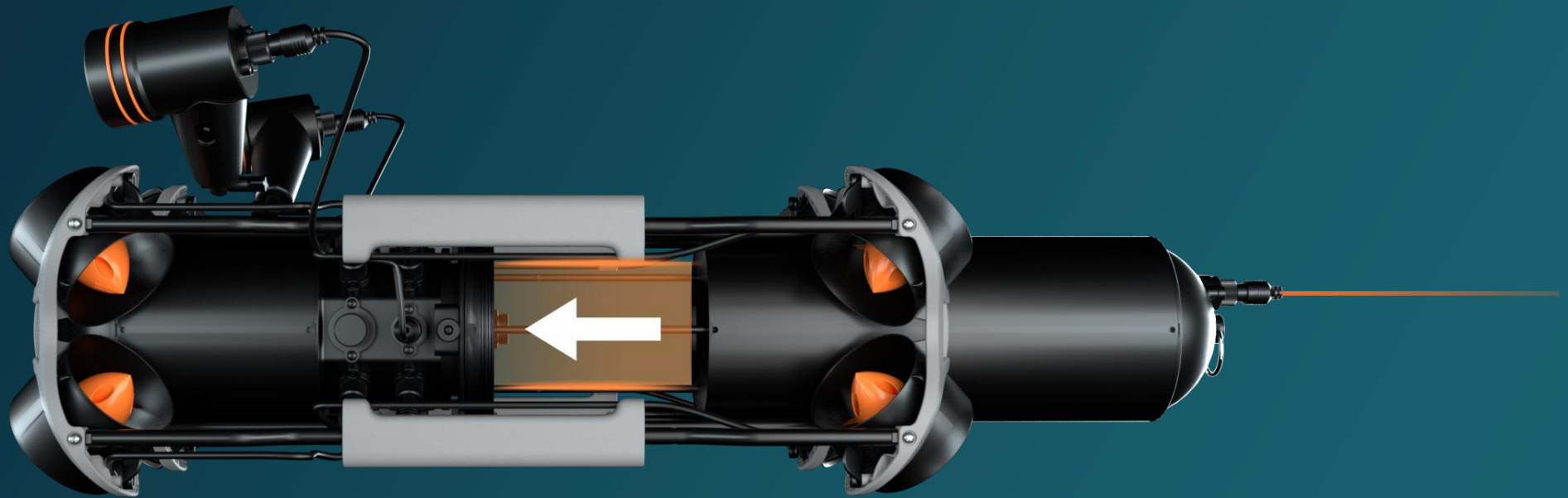
CHASING Shore-based Power Supply System is available in **100m** or **200m** cable for power transmission. The cable length can be determined according to the operation coverage area to satisfy the demand of 24/7 operation in a wide range of the ROV.

Furthermore, **the high-power cable is able to withstand up to 250kgf**. With more firm and reliable characteristics, it can ensure safe operation even in harsh water environment.



Easy to install, plug-and-play

CHASING Shore-based Power Supply System (C-SPSS) is designed with a battery compartment, which is easy to install, plug-and-play, and started up quickly.



Battery Compartment
easy to install, plug-and-play

Efficient security, multiple protection

Armed with a multiple protection system, including leakage protection, overcurrent protection, undervoltage protection, overvoltage protection, short circuit protection and high temperature protection, the C-SPSS can guarantee the safety of users in operation.

multiple protection system



undervoltage
protection



short circuit
protection



high temperature
protection



including leakage
protection



overcurrent
protection



overvoltage
protection



Easy to take, comprehensive protection

Equipped with CHASING advanced trolley case which is of protective structure at military police grade, light and portable, and convenient for storage.



light and portable, and convenient for storage.

Product parameters

Shore-Based Power Supply Box

Size	230*315*118mm
Weight	3.9kg
IP Rating	IP21
Operating Temperature	-10~+50°C
Humidity	5%-95% RH, no condensation
LCD Screen	Resolution: 320*240 Touchable
Ethernet Port Rate	10/100Mbps
Input Parameters	90-125VAC 50/60HZ,15A MAX 200-264VAC 50/60HZ,10A MAX
Output Parameters of HV Port	490VDC,1500W MAX@110V~ 490VDC,2000W MAX@220V~
Output Parameters of RC Port	24VDC,50W MAX
Effectiveness	≥92%

HV Reel

Size	321*380*342mm
Weight (without cable)	4.4kg
IP Rating	IP54
Operating Temperature	-10~+50°C
Input/output Parameters	490VDC,4.1A MAX

HV Tethering Cable

Length	100m/200m (as per actual specification)
Weight	35g/m
Operating Temperature	-10~+50°C
Diameter	Φ7.2mm
Tensile Capacity	250kgf
Tethering Capacity	+5-10g (in fresh water)
Wire Gauge	27awg (yellow and white) 20awg (red and black)

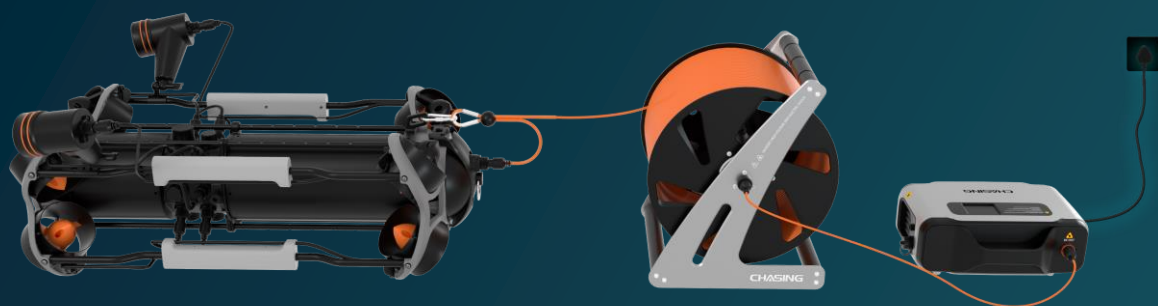
Power Supply Compartment

Size	Φ120*360mm
Weight	2.7kg
IP Rating	IP68, 200m, voltage-resistance
Operating Temperature	-10~+50°C
Input Parameters	490VDC,3.3A MAX
Output Parameters	24VDC,60A MAX
Effectiveness	≥93%

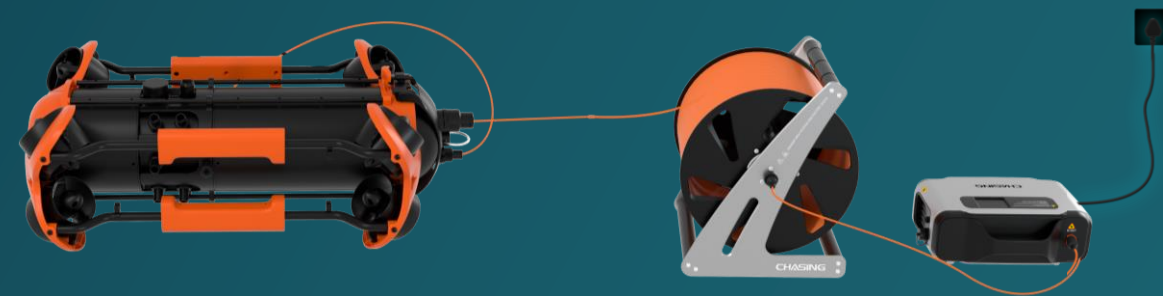
CHASING Shore-Based Power Supply System

CHASING
潜 行 创 新

Users of CHASING M2 PRO and CHASING P200 PRO MAX



CHASING M2 PRO MAX



CHASING M2 PRO

CHASING

CHASING Shore-Based Power Supply System



www.chasing.com